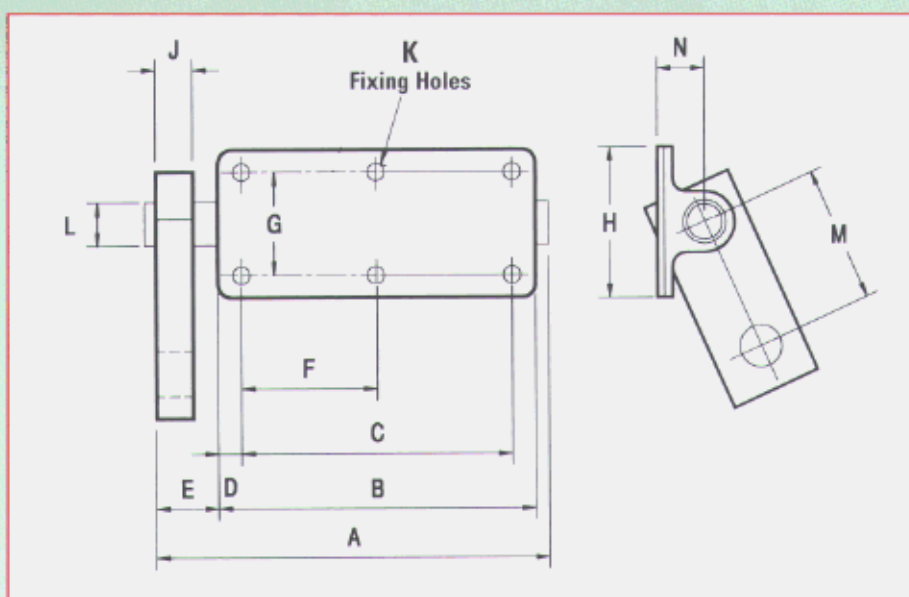


Flexiride Welded Arm Suspension Units

Weight Range 250 - 425Kg

Data Sheet Issue 00/01

Technical Data



Note: Arm angle to suit customers requirement, i.e. splined drop arm.

Size/Ref number	Dimensions (mm)												
	A	B	C	D	E	F	G	H	J	K	L	M	N
2/90	188	140	121	10	38	60	60	79	25	6x5/16"	22	90	20
3/90	222	178	159	10	38	79	73	92	25	6x5/16"	25	90	22

CAPACITIES

Size/Ref number	Product Code	Capacities per pair kg
2/90	FW3	250
3/90	FW4	425

Peak Trailers Limited reserve the right to alter prices and specifications in line with costs and material availability.



Peak Trailers Limited
 Waterloo Industrial Estate, Waterloo Road, Bidford-on-Avon, Warwickshire, B50 4JH
 Telephone: 01789 778041 Facsimile: 01789 490331 IDD: 44 789
 e-mail: sales@peaktrailers.com Website: www.peaktrailers.com

