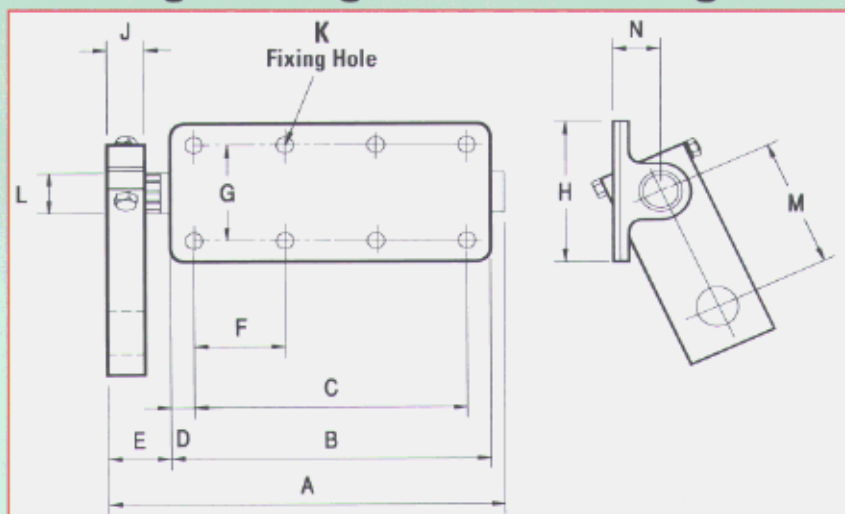


# Flexiride Suspension Units

## Weight Range 250 - 5000Kg

Data Sheet Issue 00/01

### Technical Data



Note: Arm angle to suit customers requirement, i.e. splined drop arm.

| Size/Ref number | Dimensions (mm) |     |     |    |    |     |     |     |    |         |    |     |    |
|-----------------|-----------------|-----|-----|----|----|-----|-----|-----|----|---------|----|-----|----|
|                 | A               | B   | C   | D  | E  | F   | G   | H   | J  | K       | L  | M   | N  |
| 2/90            | 188             | 140 | 121 | 10 | 38 | 60  | 60  | 79  | 25 | 6x5/16" | 22 | 90  | 20 |
| 3/90            | 222             | 178 | 159 | 10 | 38 | 79  | 73  | 92  | 25 | 6x5/16" | 25 | 90  | 22 |
| 4/90            | 248             | 197 | 159 | 19 | 40 | 79  | 86  | 105 | 25 | 6x3/8"  | 29 | 90  | 25 |
| 6/90            | 273             | 222 | 194 | 14 | 43 | 97  | 86  | 112 | 25 | 6x3/8"  | 32 | 90  | 29 |
| 10/115          | 325             | 273 | 248 | 13 | 44 | 83  | 111 | 137 | 30 | 8x1/2"  | 38 | 115 | 35 |
| 14/115          | 395             | 337 | 295 | 21 | 46 | 98  | 114 | 143 | 35 | 8x1/2"  | 41 | 115 | 37 |
| 21/115          | 472             | 397 | 343 | 27 | 59 | 86  | 127 | 156 | 45 | 10x1/2" | 45 | 115 | 41 |
| 33/115          | 525             | 451 | 387 | 32 | 59 | 97  | 140 | 168 | 45 | 10x1/2" | 51 | 115 | 48 |
| 50/115          | 676             | 584 | 514 | 35 | 75 | 103 | 171 | 203 | 57 | 12x1/2" | 60 | 115 | 56 |

| Size/Ref number | Product Code | Capacities per pair kg | Bolt size inches/UNF | Bolt torque kgm |
|-----------------|--------------|------------------------|----------------------|-----------------|
| 2/90            | FS2          | 250                    | 5/16"                | 2.4             |
| 3/90            | FS4          | 425                    | 3/8"                 | 4.2             |
| 4/90            | FS6          | 600                    | 3/8"                 | 4.2             |
| 6/90            | FS9          | 750-900                | 1/2"                 | 9.8             |
| 10/115          | FS13         | 1000-1300              | 5/8"                 | 19.4            |
| 14/115          | FS18         | 1500-1800              | 5/8"                 | 19.4            |
| 21/115          | FS23         | 2000-2300              | 3/4"                 | 34.6            |
| 33/115          | FS30         | 2400-3000              | 3/4"                 | 34.6            |
| 50/115          | FS50         | 5000                   | 1"                   | 83.0            |

Peak Trailers Limited reserve the right to alter prices and specifications in line with costs and material availability.

### Peak Trailers Limited

Waterloo Industrial Estate, Waterloo Road, Bidford-on-Avon, Warwickshire, B50 4JH

Telephone: 01789 778041 Facsimile: 01789 490331 IDD: 44 789

e-mail: sales@peaktrailers.com Website: www.peaktrailers.com

